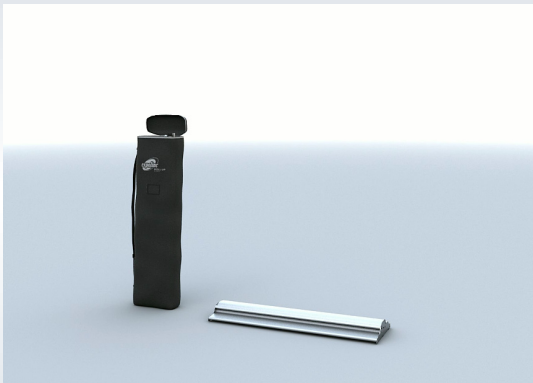




# **SET UP INSTRUCTION**

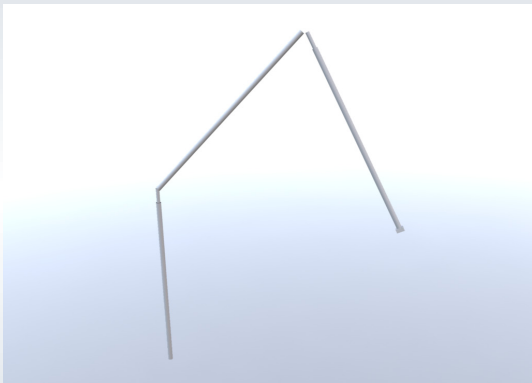
**ROLL UP CLASSIC  
ROLL UP PROFESSIONAL**

1



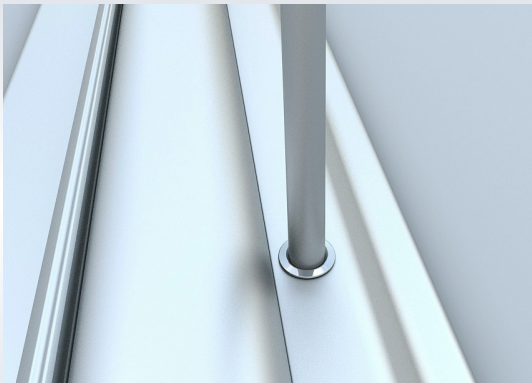
Take the parts out of the bag.

**2**



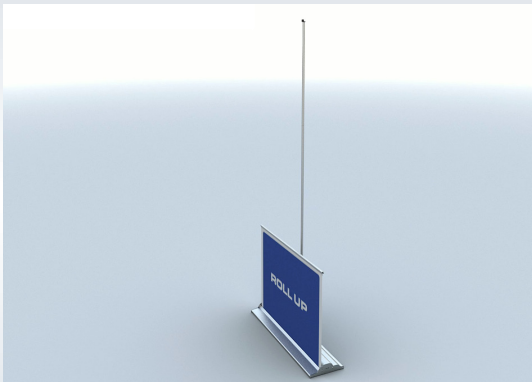
Unfold the 3-part supporting rod. Make sure that the parts click in each other.

**3**



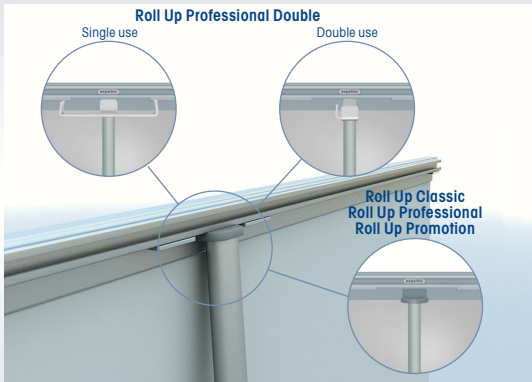
Place the supporting rod into the hole of the cassette.

**4**



Pull up the graphic panel.

5



Attach the top profile to the top fastener of the supporting rod.

6



**Verify that the system is even. READY!**

Adjust, if needed, with the adjustable feet underneath the stand. (Not Roll Up Promotion)

## ACCESSORIES



A low voltage spotlight that casts light evenly over the entire banner. The spotlight is transported in a nylon bag, which can be fastened to the standard bag.





**Attach the spotlight on the top profile.**